



La Primavera (Spring)

Botticelli Filipepi 1481 - 1482





From the collection of
Uffizi Gallery

Commissioned by Lorenzo and Giovanni di Pierfrancesco de' Medici, cousins of Lorenzo il Magnifico, in 1498 this [painting](#) was in their florentine residence. Probably based on a theme suggested by Poliziano, it depicts a symbolic and allegorical subject with a complex interpretation: the Realm of Venus. Zephyr chases the nymph Chloris, who turns into the goddess Flora at right. Venus is underneath a blindfolded Cupid in flight with the three Graces and Mercury at left.

Details

Title: La Primavera (Spring)

Creator: [Botticelli](#) Filipepi

Date created: 1481 - 1482

Style: Renaissance/ Mythological scene

Provenance: Lorenzo and Giovanni di Pierfrancesco de' Medici family collections

Physical Dimensions: w3140 x h2030 mm

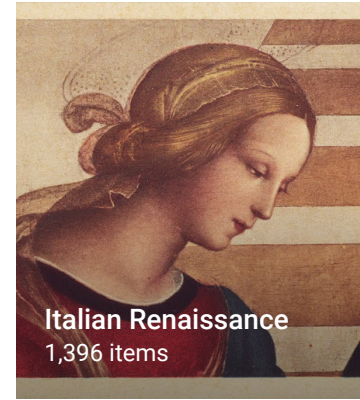
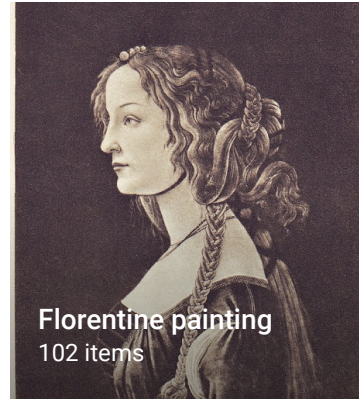
Original Title: La Primavera

Type: [painting](#)

Medium: [Tempera](#) on panel



Discover more



Google Arts & Culture

Google Arts & Culture features content from over 1,200 leading museums and archives who have partnered with the Google Cultural Institute to bring the world's treasures online.

Follow us

