



Setting Sun

Egon Schiele 1913



Владелец коллекции
Leopold Museum

Once the sun sets, the earth turns cold, almost as if its light has been extinguished, as we can see in the foreground's dark bands of grass and tiny [flowers](#). Two small trees tower over the hilly terrain in the foreground; the tops of the [trees](#) crisscross with the [sea](#), the islands, and the sky. Every leaf on the twigs is dried-up and has grown stiff from the cold; the branches

themselves turn toward each other, in need of shelter. The sinking sun is only partially visible and the backlit [mountains](#) appear in a cold, carmine coloring. It is a farewell to light, warmth, and life. Schiele's inspiration for this scene most likely came from the coast near [Trieste](#) and the two barren red-rocked islands lying off the coast. Before Rudolf Leopold acquired the [painting](#), it was hanging above the desk belonging to [Schiele's](#) long-time patron and collector, Arthur Roessler.

[ПЕРЕВЕСТИ С ПОМОЩЬЮ GOOGLE](#)

Подробнее

Название: Setting Sun

Создатель: [Egon Schiele](#)

Дата создания: 1913

Фактические размеры: w905 x h900 cm (Without Frame)

Technique: Oil on canvas

Signatures, Inscriptions, and Markings: Signed and dated top half-right: [EGON SCHIELE](#) 1913.

Painter: [Egon Schiele](#)

Original German Title: „Versinkende Sonne“

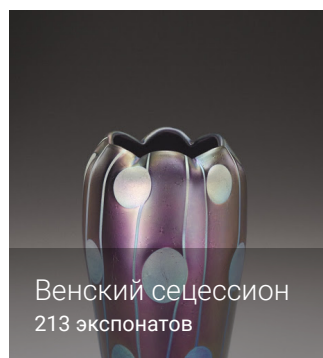
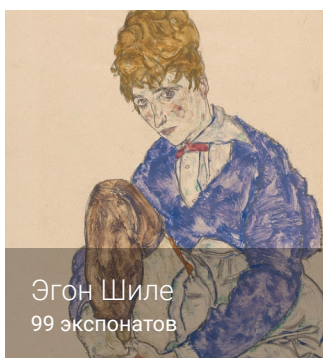
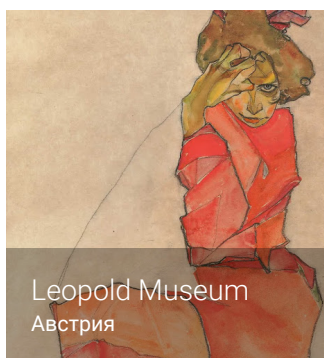
Тип: [Paintings](#)

Права: Leopold Museum, Vienna, Inv. 625, Leopold Museum, Vienna, Inv. 625

Внешняя ссылка: [Leopold Museum, Vienna](#)



Ещё объекты



Google Arts & Culture

Здесь собраны экспонаты из более чем 1200 ведущих музеев и архивов, которые захотели показать сокровища мировой культуры в Интернете с помощью Google Cultural Institute.

Мы в социальных сетях

