



---

## Kneeling Female in Orange-Red Dress

**Egon Schiele** 1910



From the collection of  
Leopold Museum

## Details

**Title:** Kneeling Female in Orange-Red Dress

**Date Created:** 1910

**Technique:** Black chalk and gouache on paper

**Signatures, Inscriptions, and Markings:** Signed below left: S

**Physical Dimensions:** w310 x h446 cm (Without Frame)

**Painter:** [Egon Schiele](#)

**Original German Title:** Kniende in orange-rotem Kleid

**Type:** [Drawings](#)

**Rights:** Leopold Museum, Vienna, Inv. 1453, Leopold Museum, Vienna, Inv. 1453

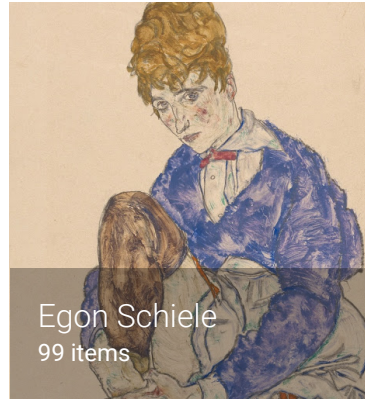


---

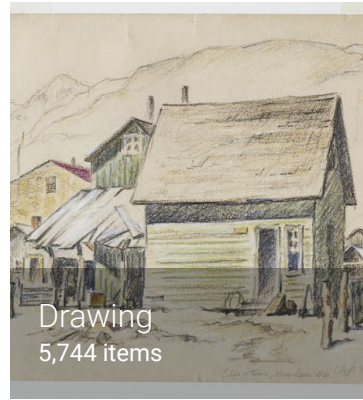
Discover more



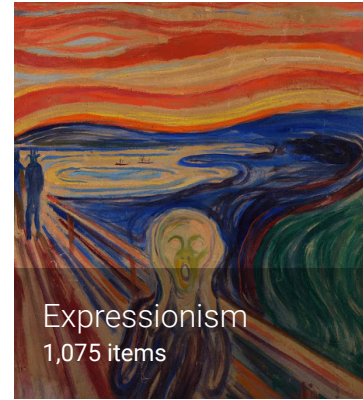
Leopold Museum  
Austria



Egon Schiele  
99 items



Drawing  
5,744 items



Expressionism  
1,075 items



Modern art  
9,788 items

## Google Arts & Culture

Google Arts & Culture features content from over 1200 leading museums and archives who have partnered with the Google Cultural Institute to bring the world's treasures online.

Follow us

