



On Lake Attersee

Gustav Klimt 1900



From the collection of
Leopold Museum

For the time, this landscape was an unusual and courageous depiction of [Klimt's](#) much-loved Attersee. Courageously, the totality of the water surface is rendered here as an almost abstract color composition and encompasses the majority of the painting. With a certain freedom, Klimt depicts the waves as turquoise speckles, which progressively shrink toward the top of the

painting and thereby suggest the illusion of depth. The dark tree tops of the island of Litzlberg in the upper-right corner are the only clearly defined objects on the horizon. Of all of his landscape paintings, this is the one where Klimt ventured furthest into abstract art. The unusual turquoise color is reminiscent of contemporaneous pictures by the French Impressionist [Claude Monet](#), but also pays homage to the unique topographical attributes of the Attersee, which features such colors during the morning hours in the summer.

Details

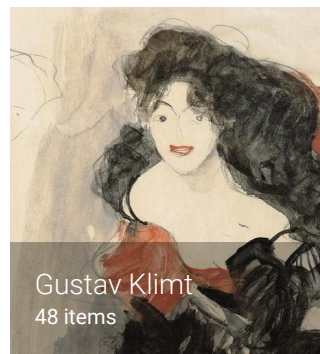
Title: On Lake Attersee

Creator: [Gustav Klimt](#)

Date created: 1900



Discover more



Google Arts & Culture

Google Arts & Culture features content from over 1,200 leading museums and archives who have partnered with the Google Cultural Institute to bring the world's treasures online.

Follow us

