

Bildnis der Adele Bloch-Bauer II 1912

<< back



Portrait of Adele Bloch-Bauer II

Measures: 190 x 120 cm
Technique: Oil on canvas
Depository: Privately owned

Adele Bloch-Bauer II is a 1912 painting by Gustav Klimt. Adele Bloch-Bauer was the wife of Ferdinand Bloch-Bauer, Born Ferdinand Bloch, the son of David Bloch (also known as Abraham Bloch), a banker and sugar factory owner, and his wife Marie, née Straschnow. Ferdinand married Adele Bauer, the daughter of Moritz Bauer (director of the Vienna bank *Wiener Bankverein*) and his wife Jeanette, née Honig, who was a wealthy industrialist who sponsored the arts and supported Gustav Klimt. Adele Bloch-Bauer was the only model to be painted twice by Klimt; she also appeared in the much more famous Portrait of Adele Bloch-Bauer I. Both portraits of Adele Bloch-Bauer were part of a protracted court battle in the United States and in Austria (see Republic of Austria v. Altmann) which resulted in five Gustav Klimt paintings being returned to Maria Altmann, the niece of Ferdinand Bloch-Bauer, in January 2006. In November 2006, Christie's auction house sold "Portrait of Adele Bloch-Bauer II" at auction for almost \$88 million, the fourth-highest priced piece of art at auction at the time. ^ Christopher Michaud, Christie's stages record art sale, Reuter's, November 9, 2006. Accessed November 9, 2006.

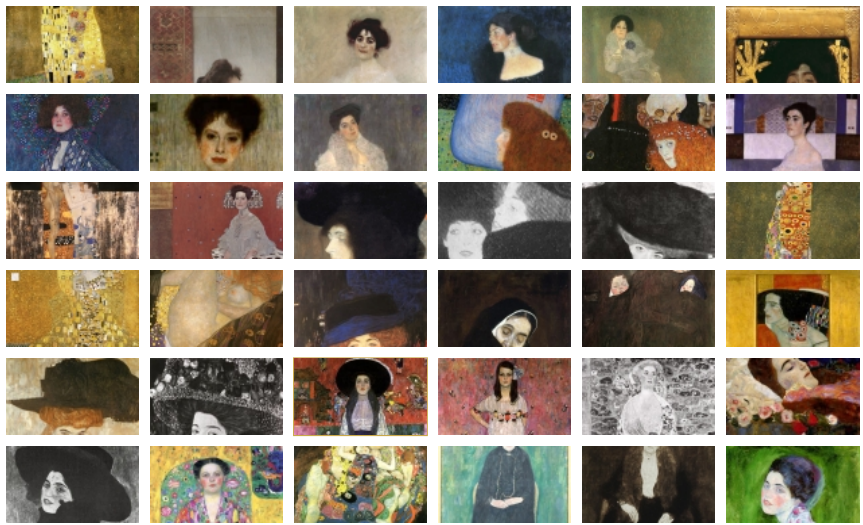


sponsored by watch2pay

<< previous picture

back to gallery

next picture >>



Tweet G+ 8 Like 5

print