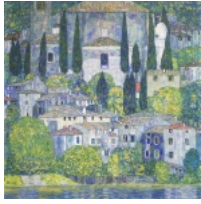


Kirche in Cassone 1913

<< back



Church in Cassone

Measures: 110 x 110 cm
Technique: Oil on canvas
Depository: Privately owned

The church was painted from a point of view in Malcesine, near the Villa Gruber in Dossodi Ferri on the peninsula Val di Sogno and Klimt used a telescope.

| footnotes = }} **Malcesine** is a *comune* (municipality) in the Province of Verona in the Italy|Italian region Veneto, located about 120 km northwest of Venice and about 40 km northwest of Verona. Malcesine lies on the shores of Lake Garda.

Main sights

Its most prominent landmark is the Castello Scaligero, which has 13th-century fortifications and an older medieval tower. Remnants of an Etruscan civilization|Etruscan tomb have been found within the castle walls. The castle was fortified by the della Scala family who ruled the region throughout the 13th century. Other sights include the *pieve* of St. Stephen (8th century), the church of *Santa Maria di Navene* (11th century) In 1786, Goethe was questioned by the local magistrate on suspicion of being a spy while drawing sketches of the castle. The German writer recalled the incident in his report about the Italian Journey. Behind Malcesine rises the 2218 meters high Monte Baldo. A cable car with rotating cabins takes passengers to 1750 meters above the sea level. From there the highest point can be accessed by walking few kilometers to the south along the ridge.

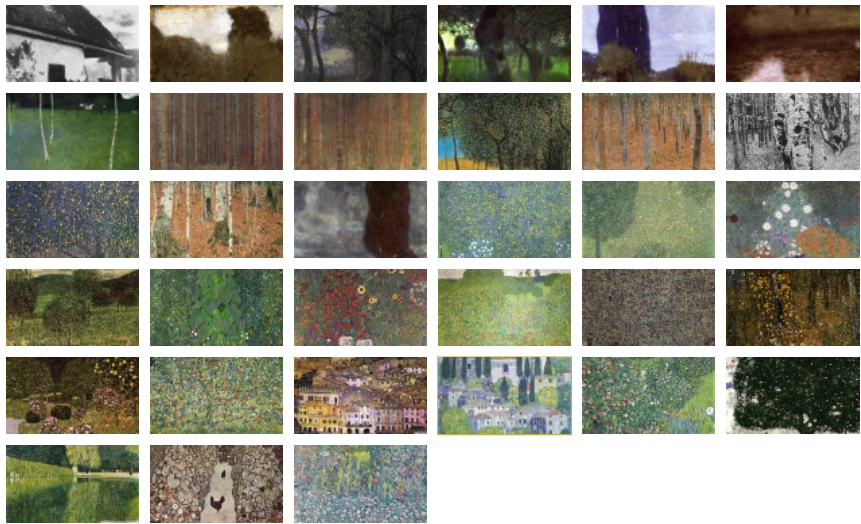


sponsored by watch2pay

<< previous picture

back to gallery

next picture >>



Tweet G+ 0
Like 5

print